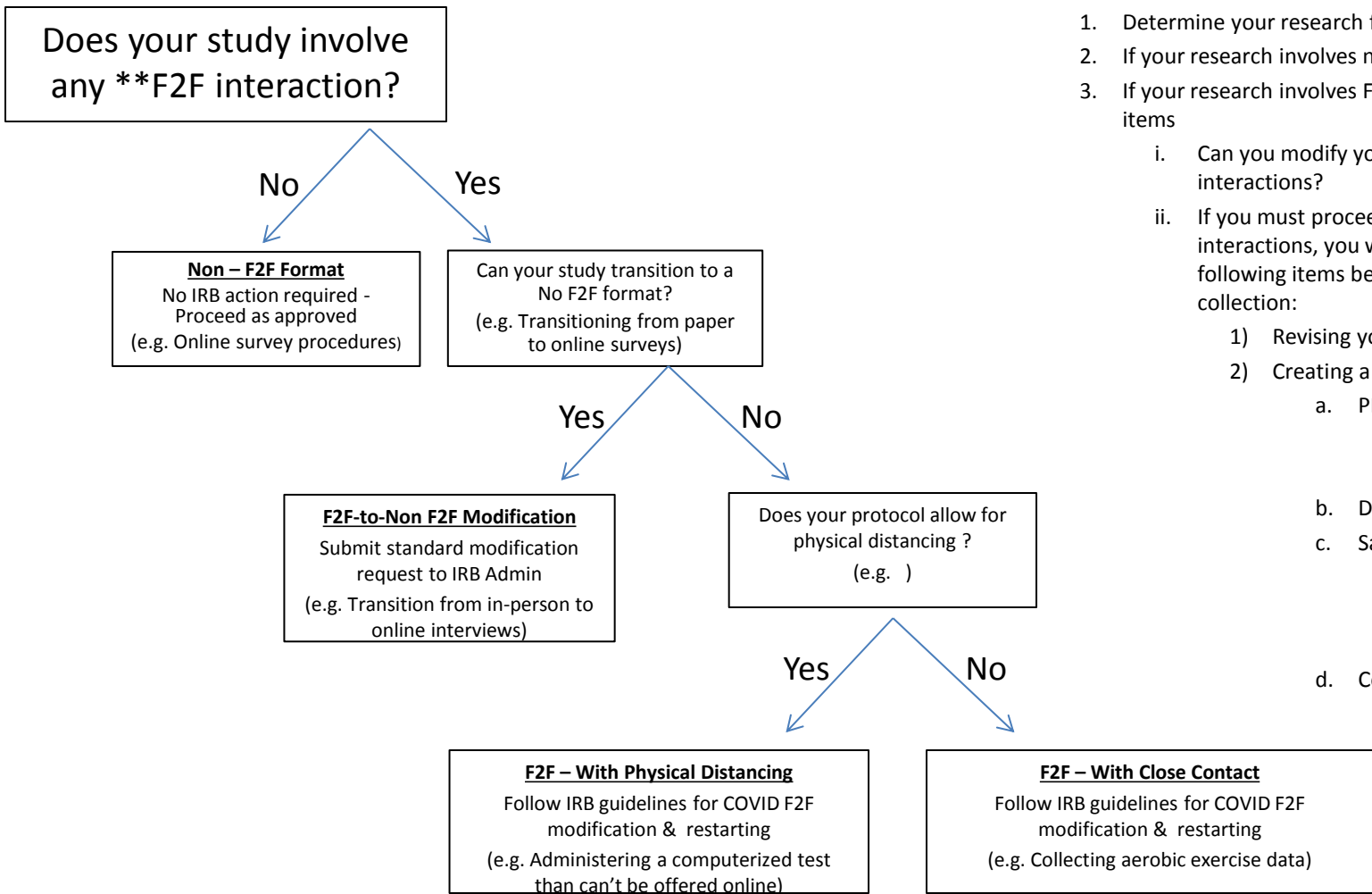


# University of Northern Iowa

## Resuming F2F Research: Guide for IRB Approved *prior to March 13*



### Steps for Resuming IRB approved F2F Research:

1. Determine your research format (algorithm)
2. If your research involves no F2F interaction, proceed.
3. If your research involves F2F interaction, consider these items
  - i. Can you modify your protocol to eliminate F2F interactions?
  - ii. If you must proceed with F2F with F2F interactions, you will be asked to address the following items before you resume data collection:
    - 1) Revising your consent documents
    - 2) Creating a COVID prevention plan
      - a. PPE
        - » Participant
        - » Researcher
      - b. Distance/Space/Contact time
      - c. Sanitizing
        - » Participant
        - » Researcher
        - » Equipment
      - d. Contact documenting (tracing)

**\*\*F2F = Face to Face, In-person data collection or recruitment**